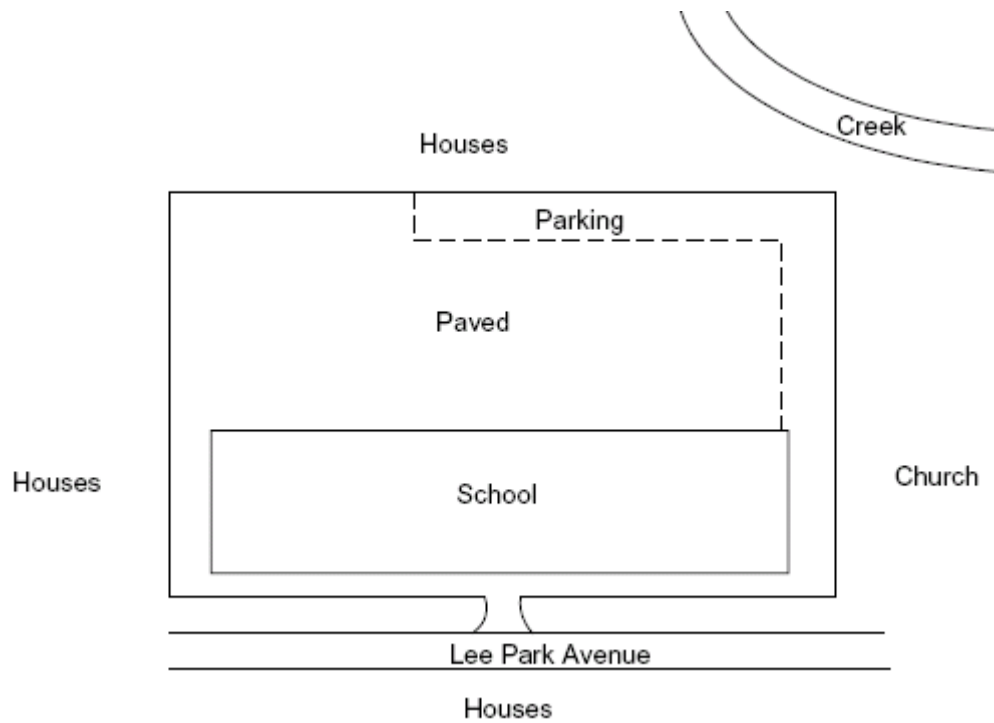
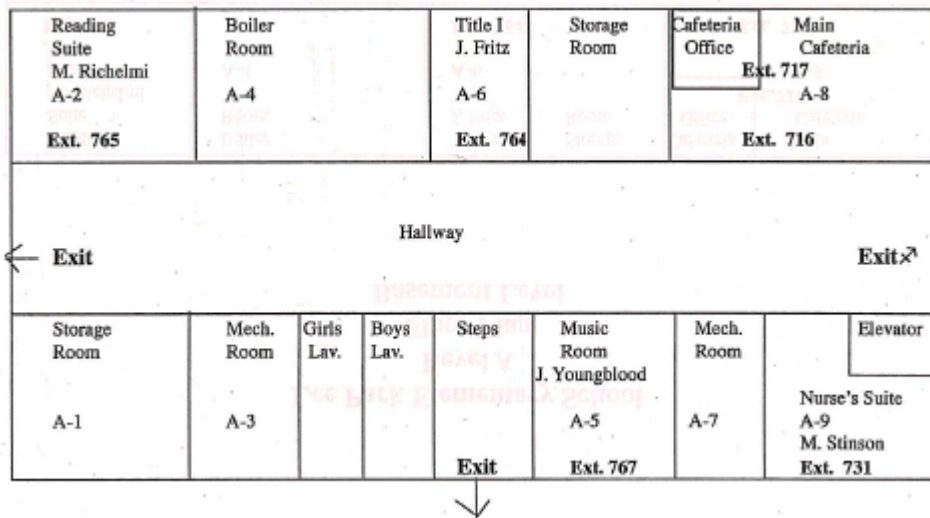


# 150034 – Lee Park Elementary School





*Site Plan of Lee Park Elementary School*



*Floor Plan of Lee Park Elementary School*

150034; Lee Park Elementary School. This school is located at 99 Lee Park Avenue, Hanover Township, Pennsylvania, in Hanover Township, Luzerne County. It is part of the Hanover Area School District. The 1903 school is set on a berm overlooking Lee Park Avenue behind two terraced levels and a sidewalk. The berm is supported by a modern rusticated concrete-block retaining wall with metal rails. This wall replaced an original stone and wrought-iron rail wall in 1988. A wide concrete staircase leads to the school entrance, centered on the building. A paved play area and a fenced parking area are located behind the school building. Scattered trees and a flag pole are located in front of the school. The small lot is surrounded by late nineteenth and early twentieth-century residential development and a church. A small creek runs by the south corner of the property.

The 1903 school building has a rectangular form featuring three levels of linear interior hallways with classrooms on either side. It stands two stories tall, with an additional raised basement. The school is a brick structure set on a stone foundation. The flat roof is covered with rubber membrane. A brick chimney is extant. The building features multiple decorative details including a parapet with cornice brackets, cast stone window sills, decorative cast stone geometric "tile" work, paneled pilasters, and the stone engraving "1903 Lee Park School 1915" above the entrance. The entrance contains modern metal-frame glass replacement double doors surrounded by fixed windows. It is sheltered by a modern flat overhang. All windows were replaced in 1989 with a combination of picture and hopper windows and/or solid panels. Many bays and all transoms were filled in at that time.

The main entrance contains a wood-framed vestibule. The entrance leads directly to a central stairwell featuring wainscoting, metal stair railings, vinyl tile floors, plaster walls, acoustic ceiling tiles, and fluorescent lights. Similar materials are located throughout the hallways except for wainscoting, which was removed in 1989. Original tin ceilings with hanging lights were removed and/or obscured with the installation of dropped ceilings. Classroom entrances are wood doors with closed transoms. Classrooms feature original slate boards with cork boards, large cloakrooms, vinyl tile floors, acoustic ceiling tiles with hanging fluorescent lights. The entire school building was renovated in 1988-89 (Mary Budinas, former Principal, pers. com., December 5, 2006). The footprint and floor plans of the school were generally retained; however, the use of space changed. Originally bathrooms were only located in the basement. Included in the renovations were new bathrooms on each floor, a computer lab and a music room, an art room (later reverted back to a classroom), a library, a nurse's suite in the basement, and the installation of an elevator. The elevator provides delivery access to an all-purpose room in the basement created from storage space. This room features a vinyl tile floor, acoustic tile ceiling, hanging fluorescent lights, movable tables and chairs, and a food serving area. Prior to 1988, students in this neighborhood school typically walked home for lunch. A three-story annex of similar design constructed ca. 1917 at the rear of the main building housed grades six through eight, sewing and shop rooms, and offices. The annex was razed in 1956 (Ciesla n.d.:129).

Lee Park Elementary School was constructed in 1903 in the Lee Park neighborhood of Hanover Township. The neighborhood was named for Washington Lee, who built a race track in the late nineteenth century in an area that became known as Lee's Park. The

Lee's Park property was sold in 1886 to a series of owners who began dividing the property into building lots. The school appears to have been constructed to serve the children in the growing community that subsequently developed. A large annex building was constructed and later razed over the course of the twentieth century. The "1915" date engraved on the building indicates that it was constructed that year; however, a history of the township dates the annex to 1917 (Ciela n.d:32, 129, 224). Renovations to the school were undertaken in 1988-89 that created multiple specialized spaces in the school, which previously had none.

(Mary Budinas, former Principal, pers. com., December 5, 2006)

Ciela, C. Charles

n.d. *1694-1994; History of Hanover Township; Including the Boroughs of Ashley, Sugar Notch, and Warrior Run and portions of Nanticoke City*. Select pages provided by Lee Park Elementary School.

United States Department of Agriculture

1939 Aerial Photograph ARB-99-181. Created on June 21, 1939. On file at the Pennsylvania State Archives, Record Group 31, Records of the Department of Commerce, State Planning Board Collection.

United States Geological Survey

1990 *Wilkes-Barre West, PA Quadrangle*. Topography by photogrammetric methods from aerial photographs taken 1942. Field checked 1947. Photorevised 1990. Denver, CO.

1992 *Wilkes-Barre West NE, PA Aerial Photograph*. USGS Reference Number 41075-B8-02-PHT. Created on April 6, 1992.



*Aerial View of Lee Park Elementary School*

More Photos of Lee Park Elementary School

